

UNI SERIES LABELS DUMBEL



Cost optimised waterproof label that performs even when applied in close proximity to objects with high water content.

PHYSICAL SPECIFICATION

Face Stock

Printable white PET, resin ribbon is recommended

Label Sizes

90 x 26 x 0.2 mm | 3.54" x 1.02" x 0.01"

Adhesive

High-performance permanent adhesive with excellent bonding to a variety of substrates

Delivery Format

2000 pcs on reel

Label Pitch

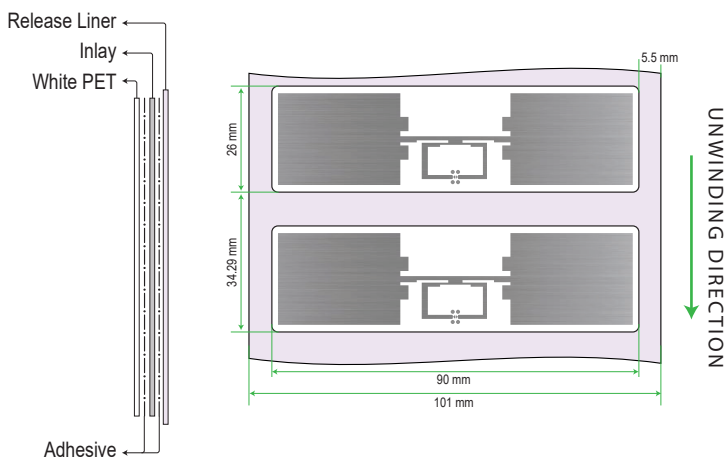
34.29 mm / 1.35"

Core Inner Diameter

76 mm / 3"

Weight

0.434 g



RF SPECIFICATION

Air interface protocol

ISO/IEC 18000-63:2015 and EPCglobal Gen2v2 compliant

Operational frequency

Global 865-928 MHz

IC type*

Impinj Monza 830

Memory configuration

EPC 128bit, TID 96bit

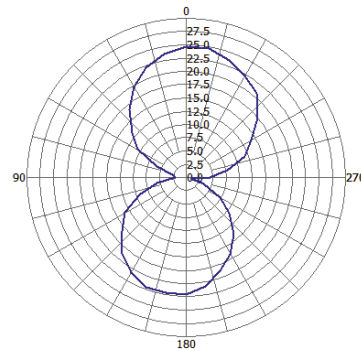
Read range (2W ERP)**

On Plastic Up to 15m/ 49.21ft | On Cardboard Up to 13.9m/ 45.6ft

Applicable Surface Materials

Non-metallic surfaces

RADIATION PATTERN



ENVIRONMENTAL RESISTANCE

Operating Temperature

-20°C to +70°C / -4°F to +158°F

Adhesive Service Temperature

-20°C to +85°C / -4°F to +185°F

Application Temperature

+10°C to +38°C / 50°F to +100.4°F

IP Classification

IP68

Chemical Resistance

No physical or performance changes in:

- 168 h Salt water (salinity 10%) exposure
- 168 h Motor oil exposure
- 12 h NaOH (10%) exposure
- 30 min Acetone exposure

Ideal Storage Condition

+23°C / 50% RH; 1 year

Expected Lifetime

Years in normal operating conditions

PERSONALISATION OPTIONS

Pre-encoding

- Customer specific encoding of EPC memory

Customised Printing

- Customer specific artwork including logo & text, numbers, barcodes etc.

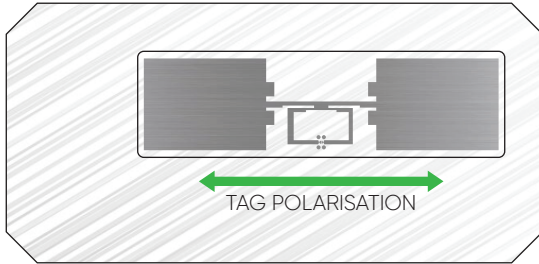
PRINTER COMPATABILITY

Compatible for printing and encoding using 4" & 6" wide industrial grade thermal transfer UHF printers.
Sensor type: Gap

As tested on Zebra ZT400 series, SATO CL4 NX series
Printronix T6000 series

For setup instructions and printer configurations contact
iotsales@sivagroup.co

PRODUCT INSTALLATION



- Ensure the application surface is not uneven and is clean and dry, to obtain maximum bond strength. If required, use approved cleaning solvents to clean surface.
- Avoid touching the backside of the label and IC location while mounting it.

ORDER INFORMATION

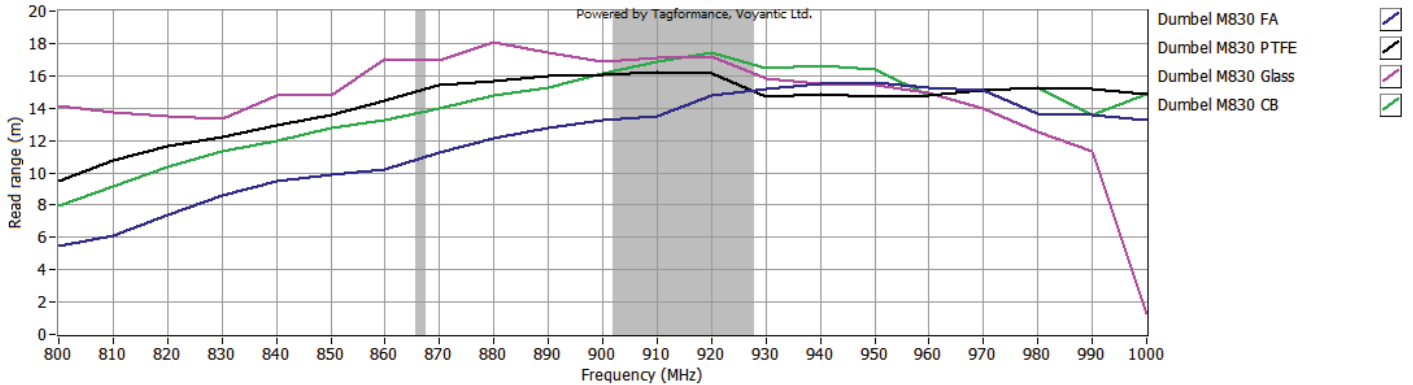
Part Number

RF.LI.DI.9026.M830

Packaging

2000 Tags/Roll;
4 Rolls/Carton

READ RANGE GRAPH



* Other IC's available on request

** The indicated read range values are measured in our laboratory testing environment, where antennas with optimum directivity are used with maximum allowed operating power. Different surface materials and environments may exhibit different results.