

# EMPORIO™ SERIES LABELS

## JEWELLERY TAG



UHF printer friendly cost optimised label for tagging Jewellery & Eyewear.

## PHYSICAL SPECIFICATION

### Face Stock

Printable white PET, resin ribbon is recommended

### Label Sizes

92 x 14 x 0.2 mm | 3.62" x 0.55" x 0.01"

### Adhesive

High-performance permanent adhesive

### Delivery Format

2000 pcs on reel

### Label Pitch

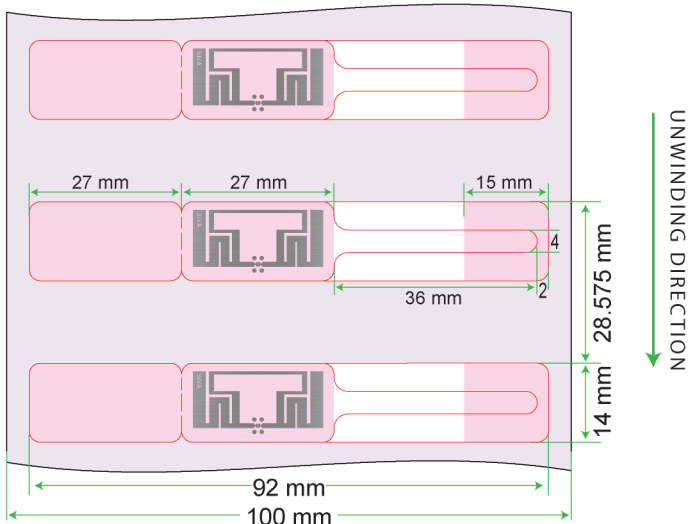
28.575 mm / 1.125"

### Core Inner Diameter

76 mm / 3"

### Weight

0.12 g



## RF SPECIFICATION

### Air interface protocol

ISO/IEC 18000-63:2015 and EPCglobal Gen2v2 compliant

### Operational frequency

Global 865-928 MHz

### IC type\*

Impinj Monza 830

### Memory configuration

EPC 128bit, TID 96bit

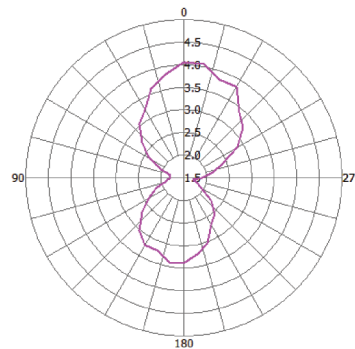
### Read range (2W ERP)\*\*

Free Air Up to 2m/ 6.56ft

### Applicable Surface Materials

All Surfaces

## RADIATION PATTERN



## ENVIRONMENTAL RESISTANCE

### Operating Temperature

-20°C to +70°C / -4°F to +158°F

### Application Temperature

+10°C to +38°C / 50°F to +100.4°F

### IP Classification

IP68

### Ideal Storage Condition

+23°C / 50% RH; 1 year

### Expected Lifetime

Years in normal operating conditions

## PERSONALISATION OPTIONS

### Pre-encoding

- Customer specific encoding of EPC memory

### Customised Printing

- Customer specific artwork including logo & text, numbers, barcodes etc

## PRINTER COMPATABILITY

Compatible for printing and encoding using desktop & wide industrial grade thermal transfer UHF printers.

Sensor type: Gap

As tested on Zebra 621R, Zebra ZT400 series, SATO CL4 NX series  
Printronix T6000 series

For setup instructions and printer configurations contact  
iotsales@sivagroup.co

## PRODUCT INSTALLATION



- Ensure the application object has sufficient space through which the label tail can be passed.
- Peel the label from the liner. Insert the tail of the label through a chain, ring, or tag hole. Fold the label tail back onto the adhesive side, aligning the edges. Press firmly to secure the adhesive overlap and form a loop. Ensure the RFID transponder area (usually in the flag section) is not in contact with metal.

## ORDER INFORMATION

### Part Number

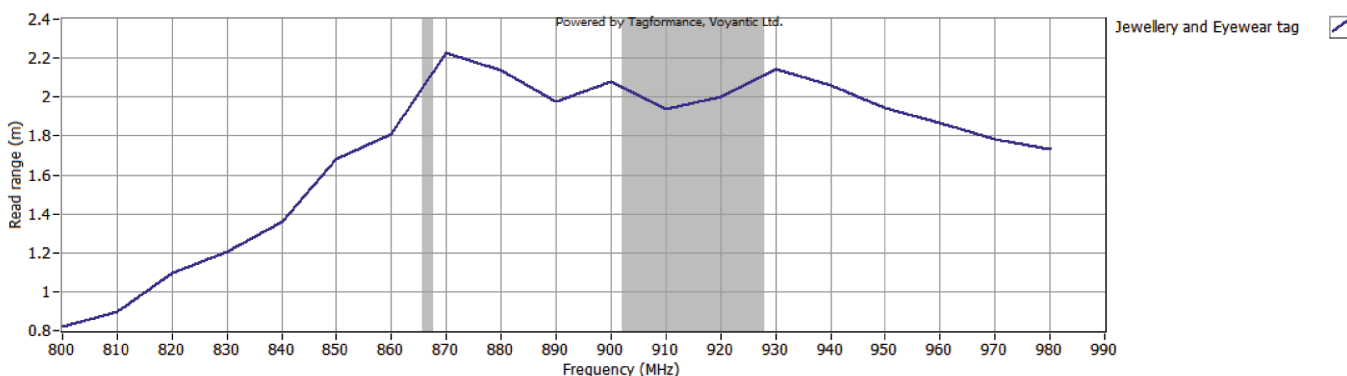
RF.LI.Jy.9214.M830

### Packaging

2000 Tags/Roll;

4 Rolls/Carton

## READ RANGE GRAPH



\* Other IC's available on request

\*\* The indicated read range values are measured in our laboratory testing environment, where antennas with optimum directivity are used with maximum allowed operating power. Different surface materials and environments may exhibit different results.