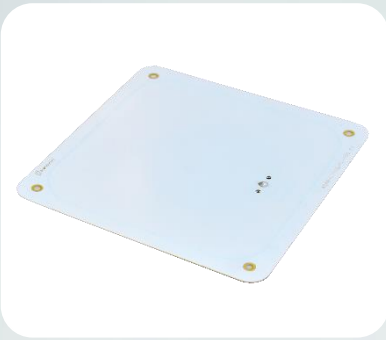


# Advantenna-L11™

## Near field RFID UHF antenna



### Benefits:

- Readings confined to the vicinity of the antenna when used with near-field tags
- Very thin form factor (13 mm with flange connector)
- Good performance
- Cost effective

### Applications:

- Point of sales
- Smart panels
- Smart tables
- Smart surfaces in general

### Product overview

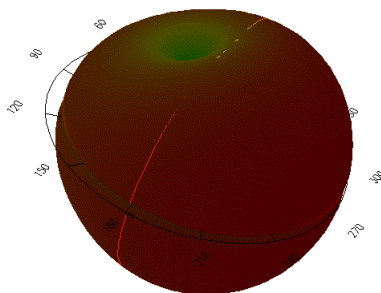
Advantenna-L11 is a compact near-field RFID UHF Antenna, with a very thin form factor, and strong and even magnetic field distribution within its detection zone. When used with inductive near-field tags the reading area can be confined to the vicinity of the antenna.

This thin form factor and the wide coverage area in the near-field zone of the antenna make this antenna ideal for many RFID applications such as points of sales, desktop applications, smart tables or other surfaces.

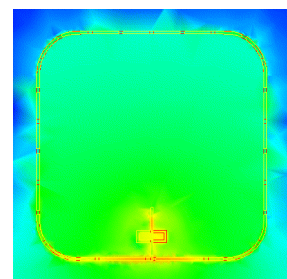
### Specifications

Operating Frequency	813 - 1000 MHz (Broadband for different regions)
Operating Detection distance	Up to 1 m (Using far-field tags)
Radiation pattern	Wide beam in both directions
Max Far-Field Gain	2.0 dBi
Beam width	100° / 100°
Input Impedance	50 Ω (May be affected by the presence of metal at distances closer than 15 cm)
Connector	SMA Flange or flange right angle
IP rating	IP65, IP68 Dust resistant, even in high concentration Resistant to normal water jets for at least 3 minutes Immersion resistant (up to 1m for up to 30 minutes)
Temperature range	-20°C to +80°C
Size excluding connector	137 mm x 137 mm x 0.5 mm 5.4 inches x 5.4 inches x 0.02 inches
Size with flange connector	137 mm x 137 mm x 13 mm 5.4 inches x 5.4 inches x 0.5 inches
Antenna weight	25 g

### Radiation pattern



### Magnetic field distribution

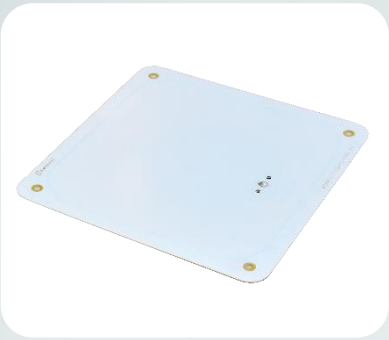


### View from the side with connector

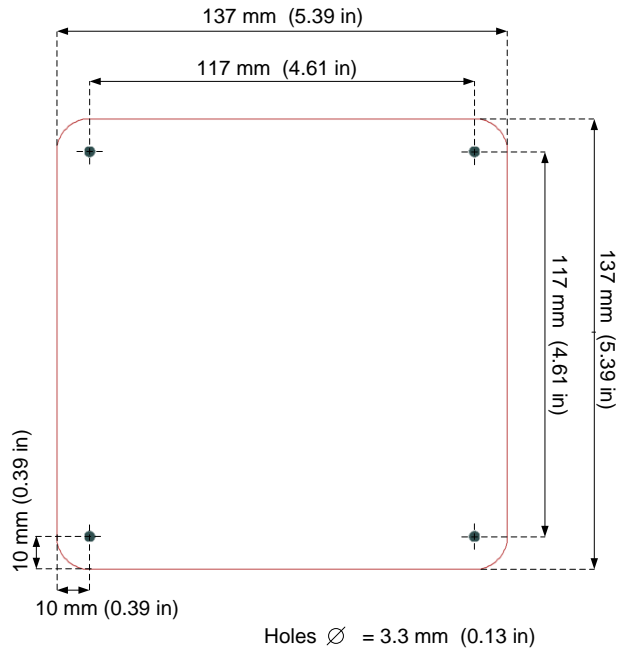


# Advantenna-L11™

## Near field RFID UHF antenna



### Mechanical specifications



### Product codes for ordering

ADAN-L11	FF	-	CS	CT	-	mmm	
							<b>FF = frequency band</b>
	DB						Dual band
							<b>Connector shape</b>
			FL				Flange straight
			FR				Flange right angle
							<b>Connector type</b>
				SMA			SMA connector
							<b>Model</b>
						100	Model number

Example:

- **ADAN-L11DB-FLSMA-100:**
  - Advantenna-**p11**
  - Dual frequency band
  - **Flange straight** connector
  - **SMA** connector
  - Model **100**