

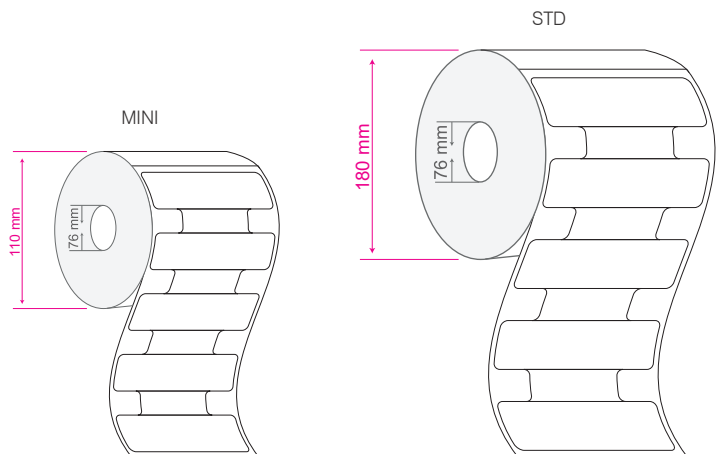


SIVA's MOM 5316 is a passive RAIN (UHF) RFID label for Mount on Metal applications delivered with a high performance permanent adhesive that bonds well with the metal surface it is mounted on. The label features a film face to print logos, product information, or scannable barcodes directly on the label and its additional flexibility for curved surfaces makes it perfect for tracking a variety of indoor assets items.

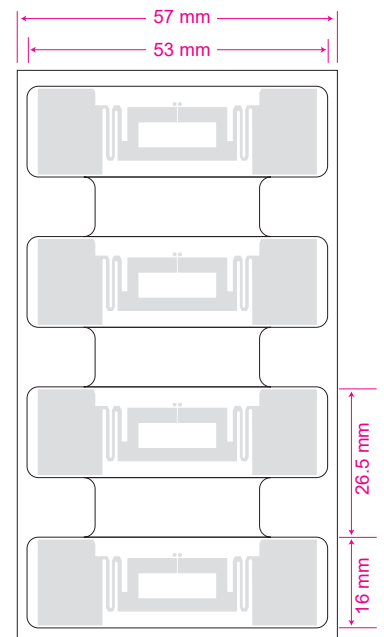
Delivered with the Impinj Monza R6P chip, the label can also be customized to customer requirements on request. This label is ideal for indoor assets management and healthcare assets management.

TYPICAL APPLICATIONS

- Indoor Asset Management: IT Assets, Furniture, Home Appliances and Kitchen Equipment
- Healthcare: Hospital Assets & Equipment



PHYSICAL SPECIFICATION		
Face Stock	Printable white PET (Resin ribbon is Recommended)	
Label Sizes	53 x 16 x 1.2 mm 2.08 x 0.63 x 0.048 in	
Adhesive	High performance permanent adhesive	
Weight	0.382 gms	
Delivery Format	On reel	
No. of Labels/ Reel	std: 500 pcs	mini: 125 pcs
Label Pitch	26.5 mm / 1.04 in	
Core Inner Diameter	76 mm / 3 in	
Roll Outer Diameter	std: 180mm / 7.08 in	mini: 110mm / 4.33 in



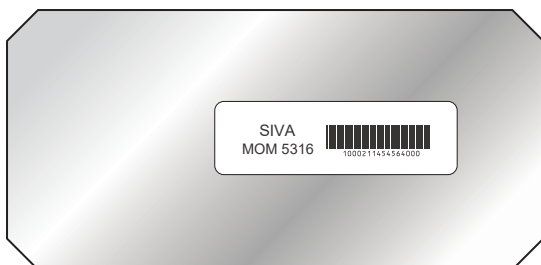
RF SPECIFICATION

Mode of Operation	Passive
Device type	Class 1 Gen 2 Passive UHF RFID transponder
Air interface protocol	EPC Global Class 1 Gen 2 ISO 18000-6C
Operational frequency	ETSI: 865 - 869 MHz
IC type*	Impinj Monza R6P
Memory configuration	EPC Size of 96 - 128 Bits, 96 bits TID with 48 bits Unique serial number
Data Retention	Upto 50 years
Write Cycle Endurance	100,000
Applicable surface materials	All surfaces
Read Range**	ETSI: On Metal - Upto 1m / 3.28 ft , On PTFE - Upto 4m / 13.12 ft , On Glass - Upto 4m / 13.12 ft FCC: On Metal - Upto 1m / 3.28 ft , On PTFE - Upto 4m / 13.12 ft , On Glass - Upto 4m / 13.12 ft

ENVIRONMENTAL RESISTANCE

Operating Temperature	-20°C to +70°C / -4°F to +158°F
Withstands Exposure to	95% humidity, 60°C × 100 h, 50% humidity, 80°C × 100 h
Peak Temperature	+80°C (Label remains securely attached with object. No physical or performance changes observed.)
Adhesive Service Temperature	-20°C to +70°C / -4°F to +158°F
Recommended Application Temperature	+10°C to +38°C / 50°F to +100.4°F
Water Resistance	IP68, tested for 5 hours in 1m deep water
Chemical Resistance	No physical or performance changes in: - 168 h Salt water (salinity 10%) exposure - 168 h Motor oil exposure - 12 h NaOH (10%) exposure - 30 min Acetone exposure
Ideal Storage Condition	+23°C / 50% RH
Expected Lifetime	Years in normal operating conditions

PRODUCT INSTALLATION



- Ensure the application surface is not uneven and is clean and dry, to obtain maximum bond strength. If required, use approved cleaning solvents to clean surface.
- Avoid touching the backside of the label while mounting it

PERSONALIZATION OPTIONS

Pre-encoding

- Customer specific encoding of EPC

Customized Printing

- Customer specific layout including logo & text, numbers, barcodes etc.

ORDER INFORMATION

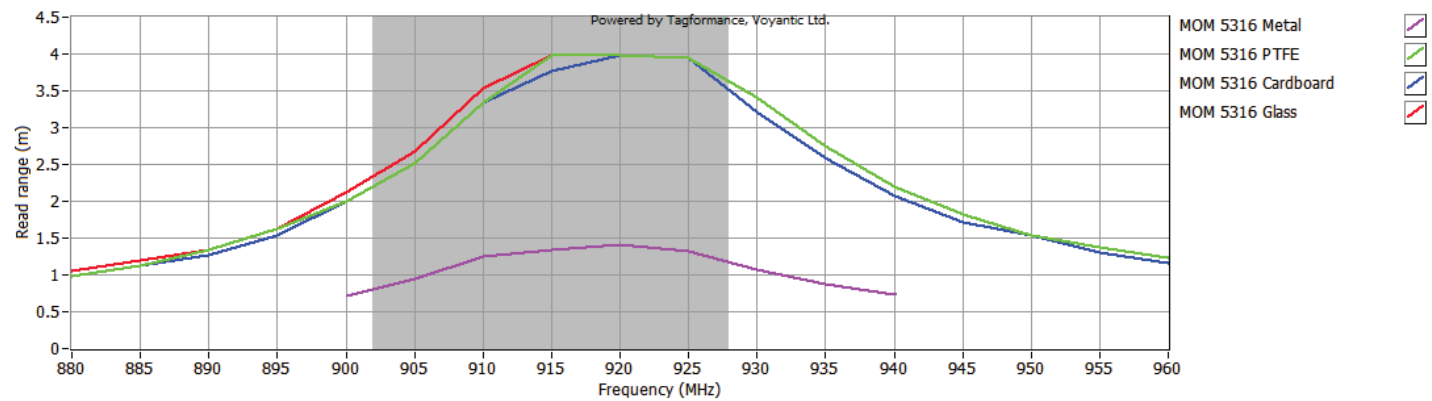
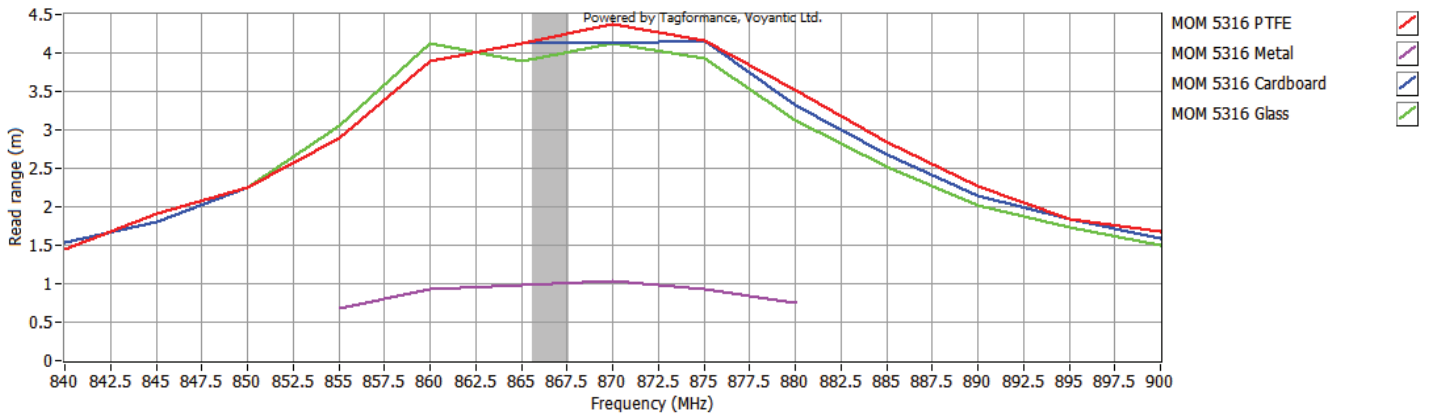
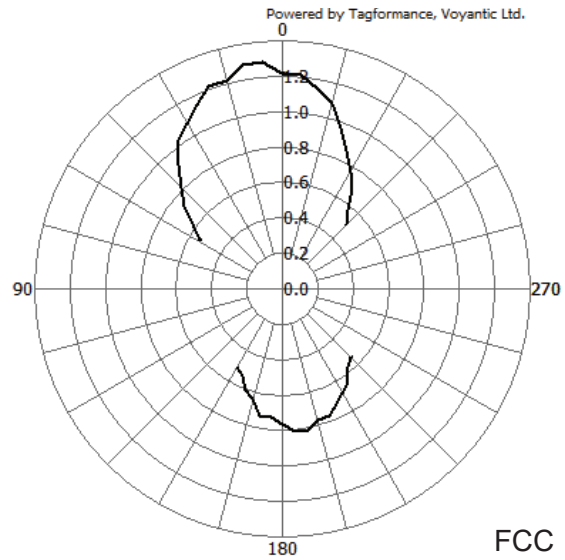
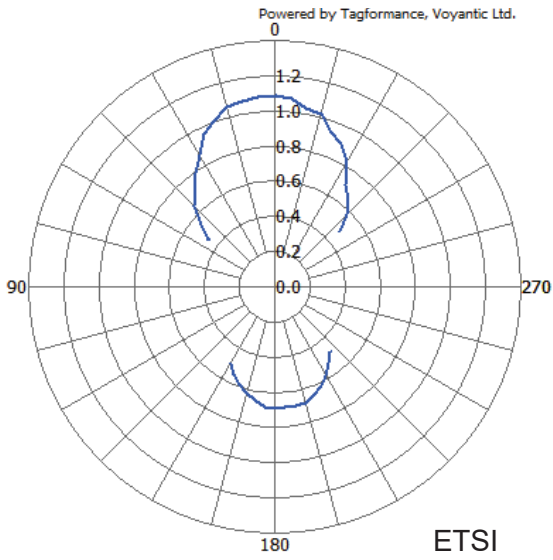
Part Number

- RF.LI.TT.MOM.5316.ETSI

Roll Sizes

- std: 500 Labels per Roll / 4 Rolls per Carton
- mini: 125 Labels per Roll

RADIATION PATTERN & READ RANGE (ETSI & FCC)



* Other IC's available on request

** The indicated read range values are measured in our laboratory testing environment, where antennas with optimum directivity are used with maximum allowed operating power. Different surface materials and environments may exhibit different results.



Version : 271120.01